

Search by your own chosen keywords

- Easier Searching through a predictive search feature
- Boolean Search terms also recognised

Easy access to cheat sheets tips and tools

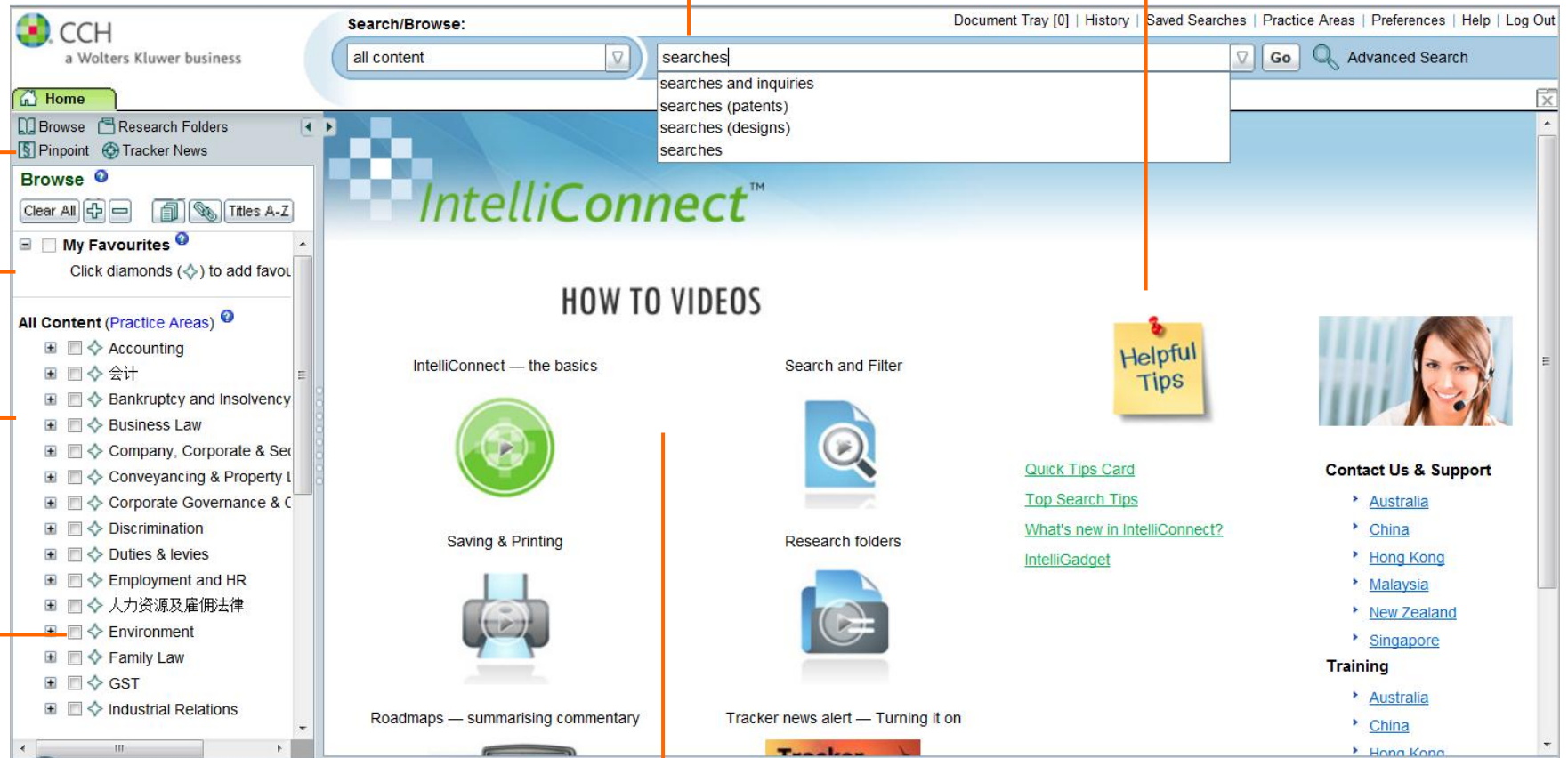
- Including the Quick tips card
- Video style Tutorials

Pinpoint
Jump to sections of legislation

My Favourites
Keep Favourites titles immediately at hand

Browse your subscription
Use the browse tree to “walk” to content of interest

Check boxes
Used to choose content for a selected content search



Easy to access self- help functions

- Video style Tutorials
- In built Quick tips cards

Easy to access Support and training

- Choose your region

For information on using Boolean search operators Click the search options link next to the GO button inside IntelliConnect

Connector	Example	Result
AND	court AND appeals	Returns documents containing both <i>court</i> and <i>appeals</i> .
OR	misleading OR deceptive	Returns documents containing <i>misleading</i> or <i>deceptive</i> . Your results will also contain documents that contain both <i>misleading</i> and <i>deceptive</i> .
NOT	misleading NOT deceptive	Returns documents containing <i>misleading</i> but not <i>deceptive</i> .
w/n	home w/5 office	Returns documents that contain <i>home</i> within 5 words of <i>office</i> . Note: value of <i>n</i> cannot exceed 127 words.
w/sen	"home office" w/sen expenses	Returns documents that contain <i>home office</i> within 20 words of <i>expenses</i> . Note: use quotation marks when searching for an exact phrase in combination with other search terms.
w/par	"home office" w/par expenses	Returns documents that contain <i>home office</i> within 80 words of <i>expenses</i> . Note: use quotation marks when searching for an exact phrase in combination with other search terms.
f/n	credit f/3 foreign	Returns documents that contain <i>credit</i> followed by <i>foreign</i> by no more than 3 words.
p/n	foreign p/3 credit	Returns documents that contain <i>credit</i> preceded by <i>foreign</i> by no more than 3 words.
*	depreciat*	Returns documents containing <i>depreciate</i> , <i>depreciating</i> , <i>depreciation</i> etc.
?	??clude	Returns documents containing <i>exclude</i> , <i>include</i> , <i>occlude</i> etc.

For information on using Boolean search operators Click the [Search Options](#) link next to the [Go Button](#) in IntelliConnect

Search your entire subscription

All content Search – the default search

- Select **all content** in the **Search scope** box.
- Type your search terms (e.g. fixtures and chattels) in the search box.
- Click **Go**.

Choose the content you want to search

Selected content Search

- Click **Browse** on the **Quick Bar**.
- **Click in the checkbox** (es) next to the area you want to search. The search scope changes automatically to **selected content**.
- Type your terms in the **search box** & click **Go**.

Send important documents to the **Document Tray** temporarily for easy printing and saving while you search or browse

Advanced Search to Search by date or access the thesaurus

Search within results

Refine your search by using the search scope box to **Search within results**

Searching for sections of legislation or case citations etc using pinpoint

- Click **Pinpoint** on the **Quick Bar**
- Use the browse to select a book of interest.
- In the right pane choose the appropriate form & type the number
- Click **Go**.

Filter results to specific areas of interest

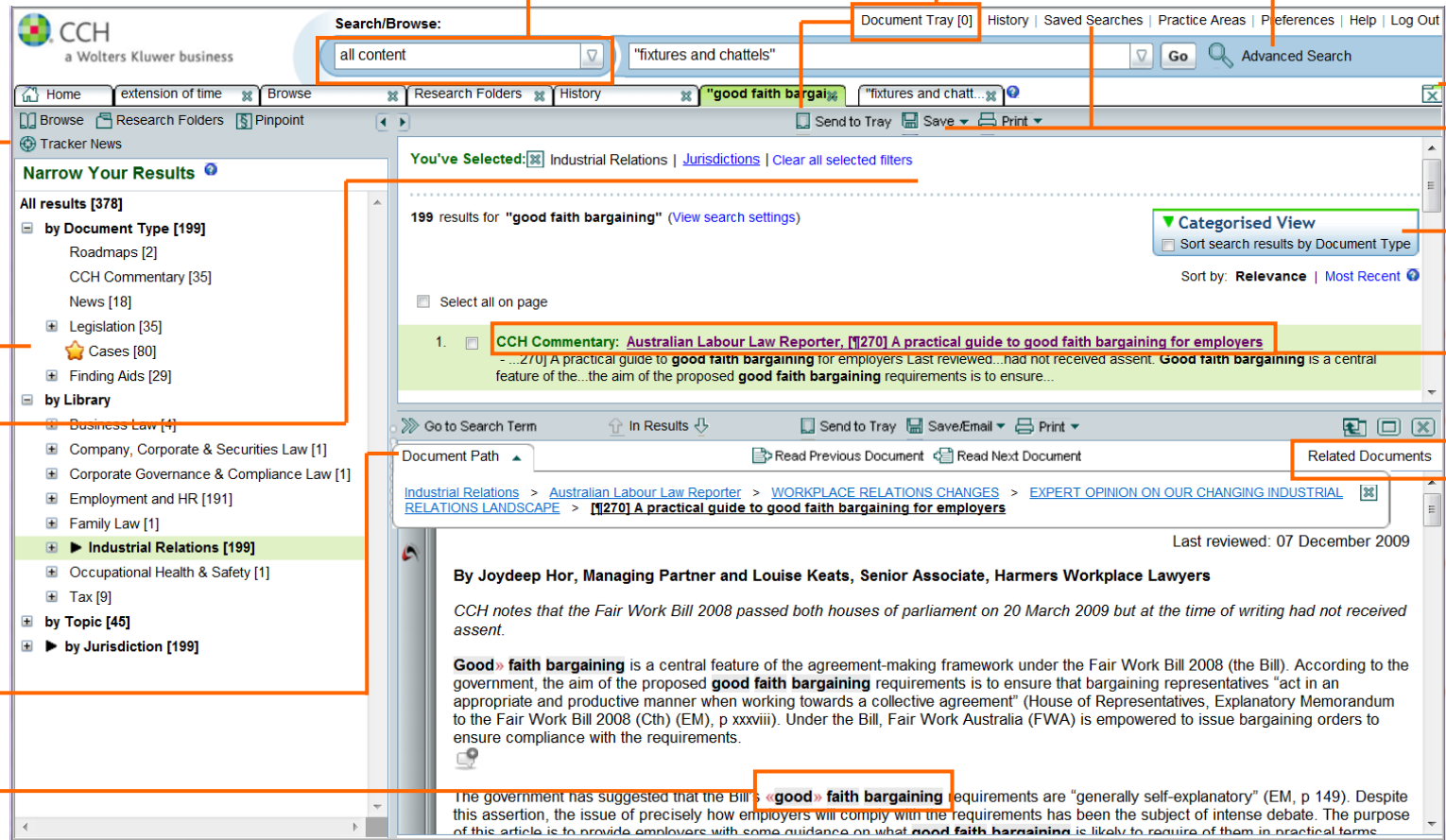
Apply multiple filters at one time

- **by Document Type** e.g. Commentary, Legislation, Cases
- **by Library** e.g. Tax, or HR Employment
- **by Topic** let CCH editors guide you to relevant commentary
- **by Jurisdiction** e.g. Federal, State Etc

View the **Document Path** for its file path, or context

Search Terms are highlighted in the document text.

Click **Go to Search Term** icon to step through each in sequence



The screenshot shows the CCH IntelliConnect search interface. At the top, there's a search bar with 'all content' selected in the search scope and 'fixtures and chattels' in the search box. Below the search bar, there are navigation tabs like 'Home', 'extension of time', 'Browse', 'Research Folders', 'History', and 'good faith bargaining'. The main content area shows search results for 'good faith bargaining' with 199 results. A filter sidebar on the left allows narrowing results by Document Type (e.g., Roadmaps, CCH Commentary, News, Legislation, Cases, Finding Aids) and by Library (e.g., Business Law, Company Law, Corporate Governance, Employment and HR, Family Law, Industrial Relations, Occupational Health & Safety, Tax). The first result is a CCH Commentary titled 'Australian Labour Law Reporter, [1270] A practical guide to good faith bargaining for employers'. The document path is shown as 'Industrial Relations > Australian Labour Law Reporter > WORKPLACE RELATIONS CHANGES > EXPERT OPINION ON OUR CHANGING INDUSTRIAL RELATIONS LANDSCAPE > [1270] A practical guide to good faith bargaining for employers'. The document text includes a section by Joydeep Hor and Louise Keats, discussing the Fair Work Bill 2008 and good faith bargaining requirements. Search terms like 'good faith bargaining' are highlighted in green in the document text.

Tabs
Maintain up to eight tabs
Close individually or close all with a single click

Save Searches
for future access

Categorised View
See search results listed in their document types

Green Text
document type
Blue Text
title and document title

Related documents
See which other documents are linked to the document being viewed

Viewing search results & documents

- After performing a search, click on a document title in the search results pane.
- The **preview pane** opens at the bottom of the screen on the left.

Research Folders

Save documents in **Research Folders** for future reference.

Create Folders for frequently accessed tools such as calculators or tables

Document Tray

Send documents to the **Document Tray** temporarily for easy printing and saving while you search or browse

Save or Print or Email lists & documents in PDF, text, or MS word format.

History

View recent documents or searches.

Save Searches

for future access

Create Practice Areas

Create multiple practice area profiles to display and search the content you define.

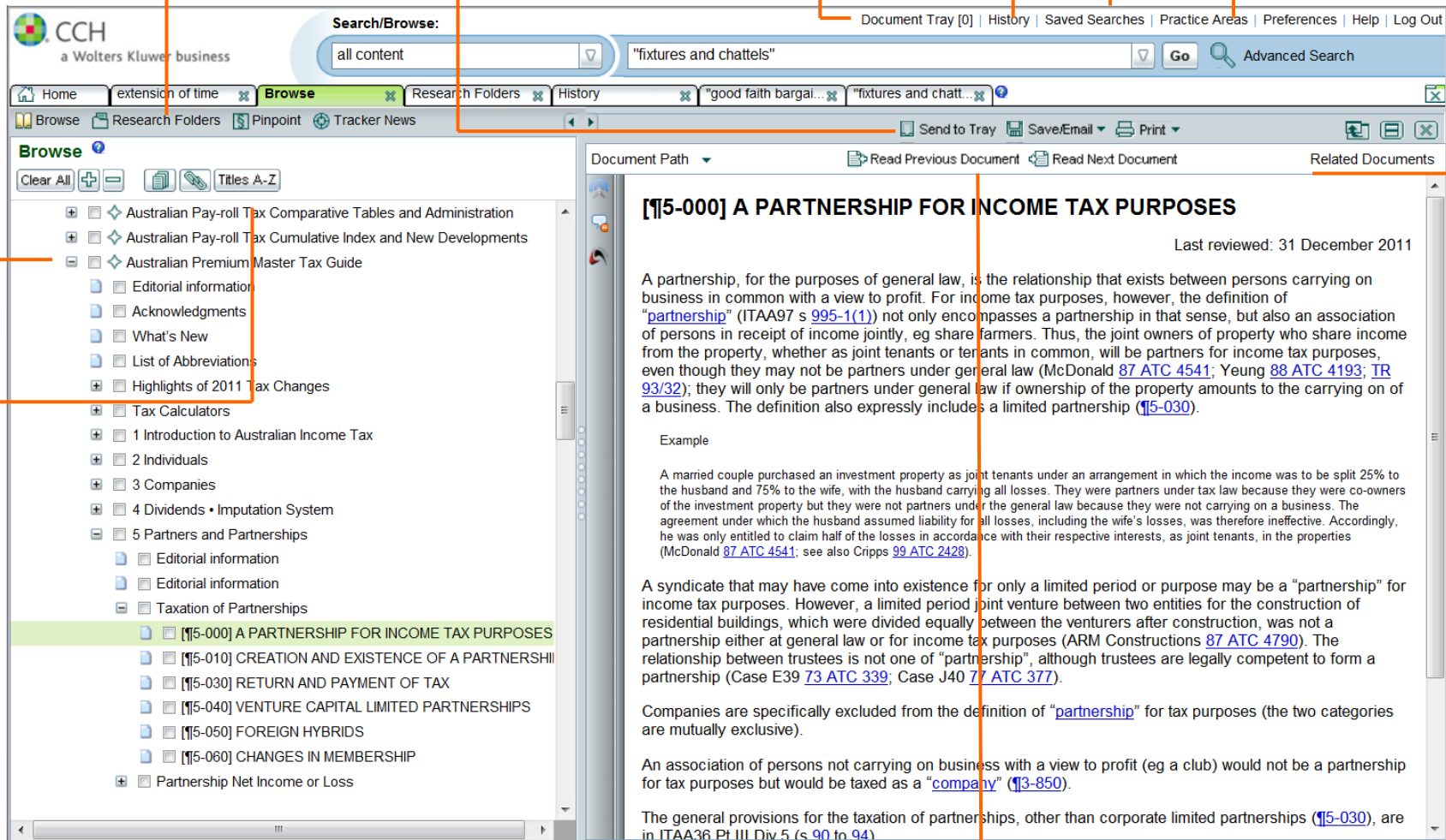
Switch between profiles from the Search/Browse dropdown menu.

Browse your subscription

- Click the **Home Page** icon or
- Click **Browse** on the **Quick Bar**.
- Use the **browse tree** to “walk” to the content you are interested in
- Click the **document** you wish to view.

“Titles” A to Z button

Lists all titles alphabetically in the right hand pane



The screenshot shows the IntelliConnect interface. At the top, there's a search bar with 'all content' and a search for 'fixtures and chattels'. Below the search bar is a navigation bar with tabs for Home, extension of time, Browse, Research Folders, History, and others. The main area is divided into a left pane with a 'Browse' tree and a right pane showing a document preview. The document title is '[15-000] A PARTNERSHIP FOR INCOME TAX PURPOSES'. The preview text discusses the definition of a partnership for income tax purposes, citing ITAA97 s 995-1(1) and other legal references. The interface includes various icons for document management like 'Send to Tray', 'Save/Email', 'Print', and 'Read Previous Document'.

Familiar screen conventions

Maximize, open in a new window, or close.

Related documents

See which other documents are linked to the document being viewed

Next and Previous Documents Icons allow you to “turn the pages” in a book